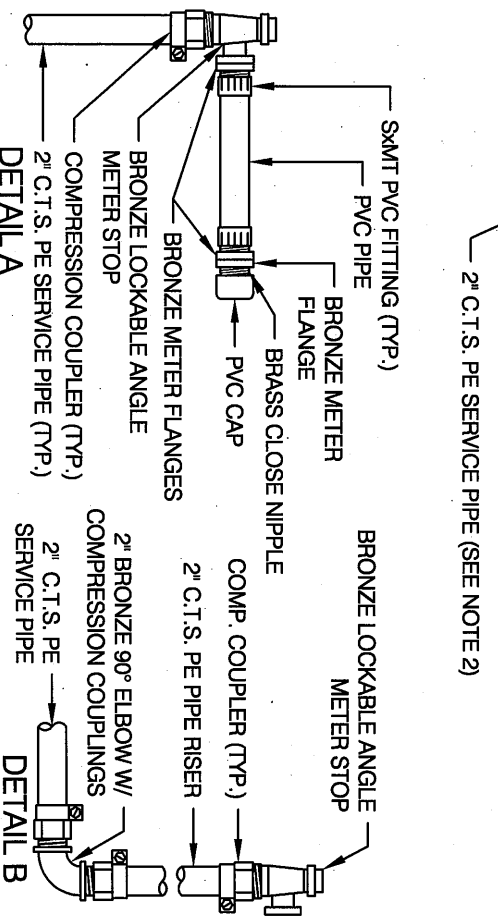


- NOTES:**
- METER SHALL BE SENSUS MODEL SR-EB TOUCH READ WITH 520R PIT SET UNIT (RADIO READ) AND SHALL BE FURNISHED & INSTALLED BY THE DISTRICT AT THE CONTRACTOR'S EXPENSE. IF METER NOT IMMEDIATELY INSTALLED, CONTRACTOR SHALL INSTALL A TEMPORARY "JUMPER" EQUAL TO METER LENGTH (SEE DETAIL A). POLYETHYLENE PIPE SHALL BE COPPER TUBE SIZE (C.T.S.) AND CONFORM TO ASTM D-2737, PE 3408 WITH A PRESSURE RATING OF 200 PSI AND A SDR OF 9.
  - COMPRESSION COUPLERS SHALL BE FORD PACK JOINT, MUELLER 110.
  - COMPRESSION CONNECTION OR APPROVED EQUAL.
  - WHEN FIELD CONDITIONS WILL NOT ALLOW THE MINIMUM RADIUS, USE DETAIL B FOR REQUIRED INSTALLATION.
  - PVC, STEEL & DI PIPELINES: SMITH-BLAIR 317 OR APPROVED EQUAL.
  - PVC, STEEL & DI PIPELINES: SMITH-BLAIR 312 OR APPROVED EQUAL.
  - METER BOX AND EXTENSION SHALL BE LIGHTWEIGHT FIBERGLASS REINFORCED PLASTIC OR APPROVED EQUAL. TOTAL COMBINED HEIGHT SHALL BE 24 INCHES. NON-POTABLE SERVICE SHALL HAVE "SID-NON-POTABLE" CAST INTO THE LID AND "NPW" IN CURB.
  - SUBMIT DETAILS TO THE DISTRICT ENGINEER FOR APPROVAL ON SERVICES LARGER THAN 2" IN SIZE.



1 1/2" - 2" METER CONNECTION

APPROVED BY: *[Signature]*  
DIRECTOR OF ENGINEERING

RCE #66517

7-18-12  
DATE

DETAIL W-13
REVISION 3
7-18-12



NOTE: CALL U.S.A. AT LEAST 48 HOURS PRIOR TO EXCAVATION 1-800-642-2444  
REFER TO THE STANDARD SPECIFICATIONS